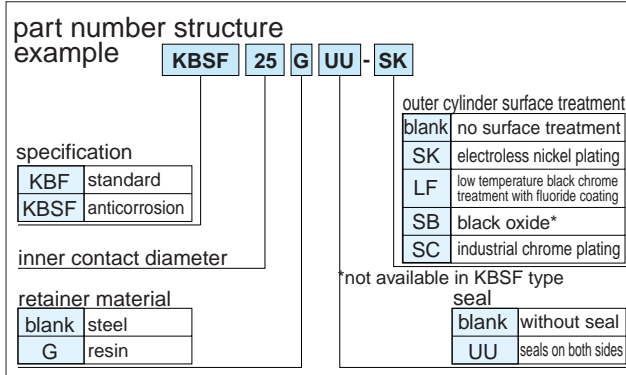
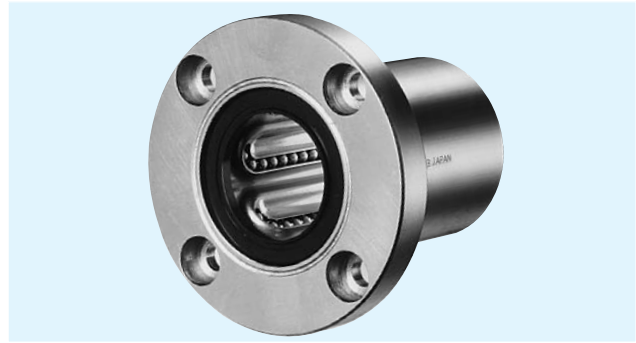


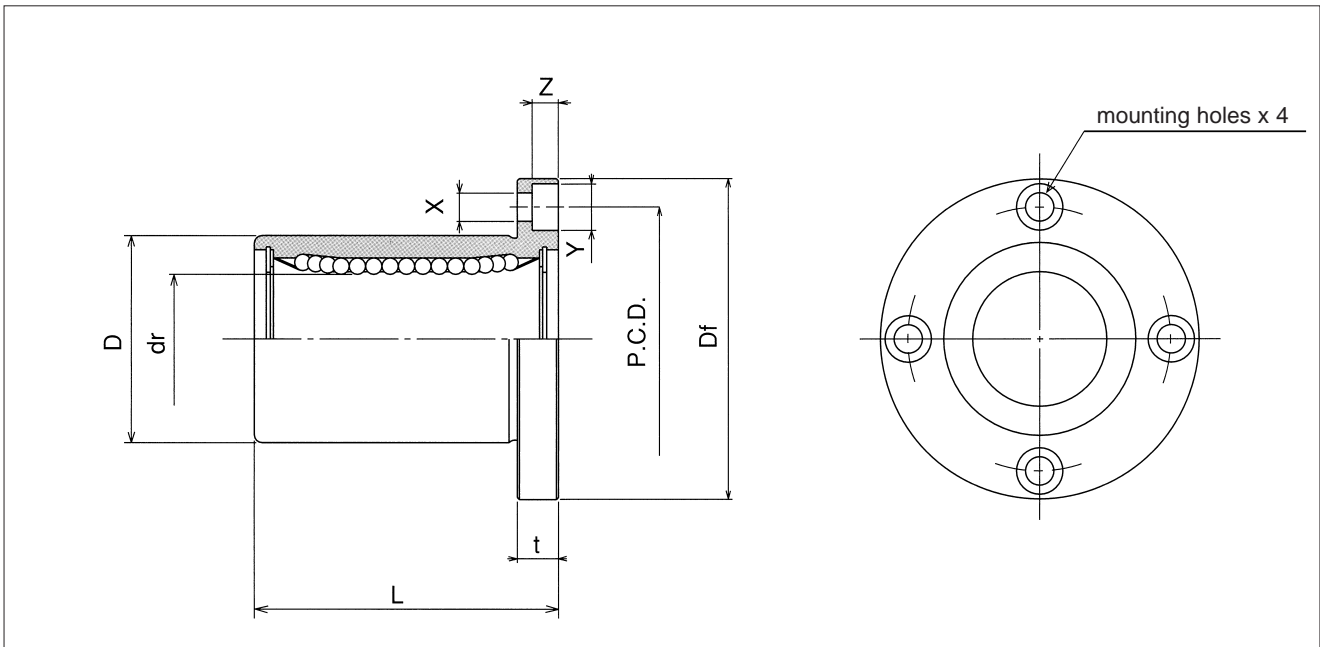
KBF TYPE

– Round Flange Type –

This type is a metric dimension series generally used in Europe.



part number				dr		D		L
standard		anticorrosion		mm	tolerance μm	mm	tolerance μm	±0.3 mm
steel retainer	resin retainer	stainless retainer	resin retainer					
–	KBF 5G	–	KBSF 5G	5	+ 8	12	0	22
KBF 8	KBF 8G	KBSF 8	KBSF 8G	8	0	16	-13	25
KBF12	KBF12G	KBSF12	KBSF12G	12	0	22	0	32
KBF16	KBF16G	KBSF16	KBSF16G	16	+ 9	26	-16	36
KBF20	KBF20G	KBSF20	KBSF20G	20	- 1	32	0	45
KBF25	KBF25G	KBSF25	KBSF25G	25	+11	40	-19	58
KBF30	KBF30G	KBSF30	KBSF30G	30	- 1	47	0	68
KBF40	KBF40G	KBSF40	KBSF40G	40	+13	62	-22	80
KBF50	KBF50G	KBSF50	KBSF50G	50	- 2	75	0	100
KBF60	KBF60G	KBSF60	KBSF60G	60	+16/-4	90	-25	125
KBF80	–	–	–	80		120		165



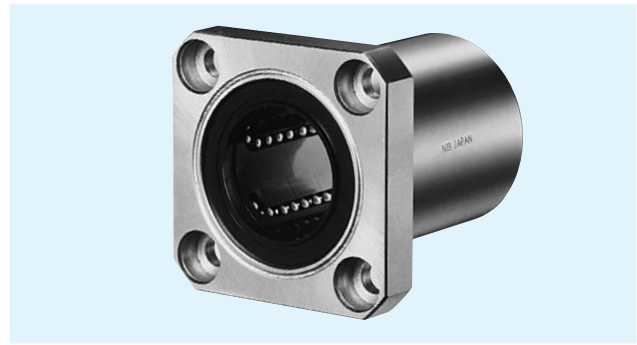
major dimensions				eccentricity	perpen- dicularity	basic load rating		mass	shaft diameter
flange						dynamic C	static Co		
Df mm	t mm	P.C.D. mm	X×Y×Z mm	μm	μm			N	N
28	5	20	3.5×6×3.1	12	12	206	265	26	5
32	5	24	3.5×6×3.1			265	402	41	8
42	6	32	4.5×7.5×4.1			510	784	80	12
46	6	36	4.5×7.5×4.1			578	892	103	16
54	8	43	5.5×9×5.1	15	15	862	1,370	182	20
62	8	51	5.5×9×5.1			980	1,570	335	25
76	10	62	6.6×11×6.1			1,570	2,740	560	30
98	13	80	9×14×8.1	17	17	2,160	4,020	1,175	40
112	13	94	9×14×8.1			3,820	7,940	1,745	50
134	18	112	11×17×11.1	20	20	4,700	9,800	3,220	60
164	18	142	11×17×11.1			7,350	16,000	6,420	80

1N≐0.102kgf

KBK TYPE

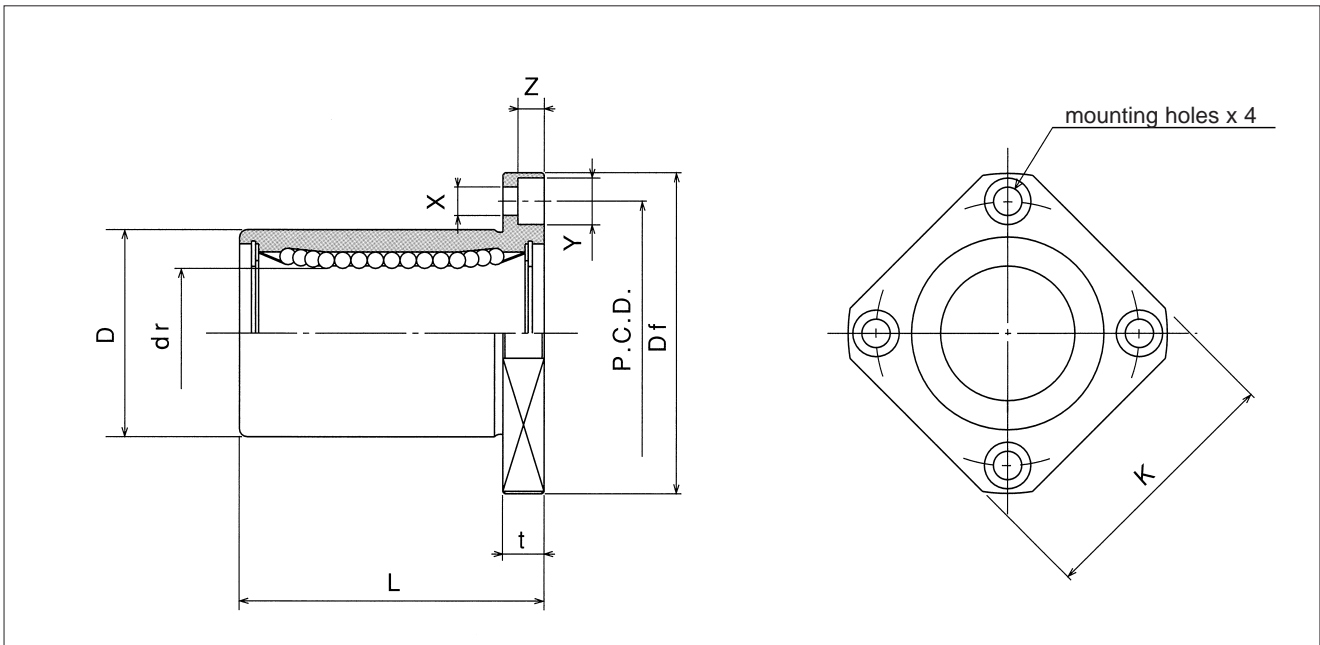
— Square Flange Type —

This type is a metric dimension series generally used in Europe.



part number structure		example		KBSK	25	G	UU	-	SK
specification		inner contact diameter		retainer material		outer cylinder surface treatment			
KBK	standard			blank		no surface treatment			
KBSK	anticorrosion			SK		electroless nickel plating			
				LF		low temperature black chrome treatment with fluoride coating			
				SB		black oxide*			
				SC		industrial chrome plating			
				*not available in KBSK type					
				blank		seal			
				UU		seals on both sides			
				blank		without seal			
				G		resin			
				blank		steel			

part number				dr		D		L
standard		anticorrosion		mm	tolerance μm	mm	tolerance μm	±0.3 mm
steel retainer	resin retainer	stainless retainer	resin retainer					
—	KBK 5G	—	KBSK 5G	5	+ 8	12	0	22
KBK 8	KBK 8G	KBSK 8	KBSK 8G	8	0	16	-13	25
KBK12	KBK12G	KBSK12	KBSK12G	12		22	0	32
KBK16	KBK16G	KBSK16	KBSK16G	16	+ 9	26	-16	36
KBK20	KBK20G	KBSK20	KBSK20G	20	- 1	32	0	45
KBK25	KBK25G	KBSK25	KBSK25G	25	+11	40	-19	58
KBK30	KBK30G	KBSK30	KBSK30G	30	- 1	47	0	68
KBK40	KBK40G	KBSK40	KBSK40G	40	+13	62	-22	80
KBK50	KBK50G	KBSK50	KBSK50G	50	- 2	75	0	100
KBK60	KBK60G	KBSK60	KBSK60G	60		90	-25	125
KBK80	—	—	—	80	+16/-4	120		165



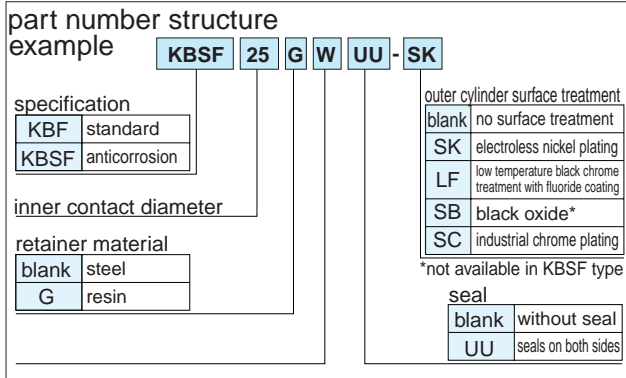
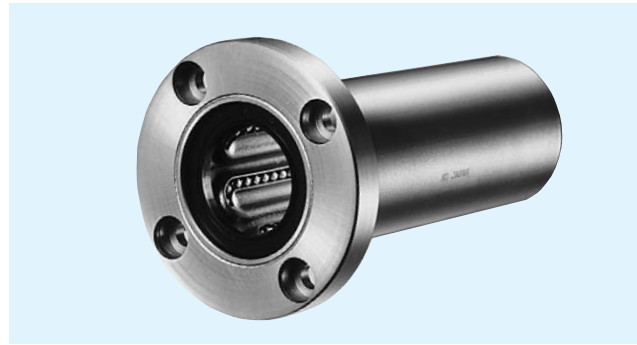
major dimensions					eccentricity	perpen- dicularity	basic load rating		mass	shaft diameter
flange							dynamic	static		
Df	K	t	P.C.D.	X×Y×Z	C	Co			g	mm
mm	mm	mm	mm	mm	μm	μm	N	N	mm	
28	22	5	20	3.5×6×3.1	12	12	206	265	20	5
32	25	5	24	3.5×6×3.1			265	402	33	8
42	32	6	32	4.5×7.5×4.1			510	784	64	12
46	35	6	36	4.5×7.5×4.1			578	892	90	16
54	42	8	43	5.5×9×5.1	15	15	862	1,370	147	20
62	50	8	51	5.5×9×5.1			980	1,570	295	25
76	60	10	62	6.6×11×6.1			1,570	2,740	465	30
98	75	13	80	9×14×8.1	17	17	2,160	4,020	975	40
112	88	13	94	9×14×8.1			3,820	7,940	1,545	50
134	106	18	112	11×17×11.1	20	20	4,700	9,800	2,780	60
164	136	18	142	11×17×11.1			7,350	16,000	5,920	80

1N≐0.102kgf

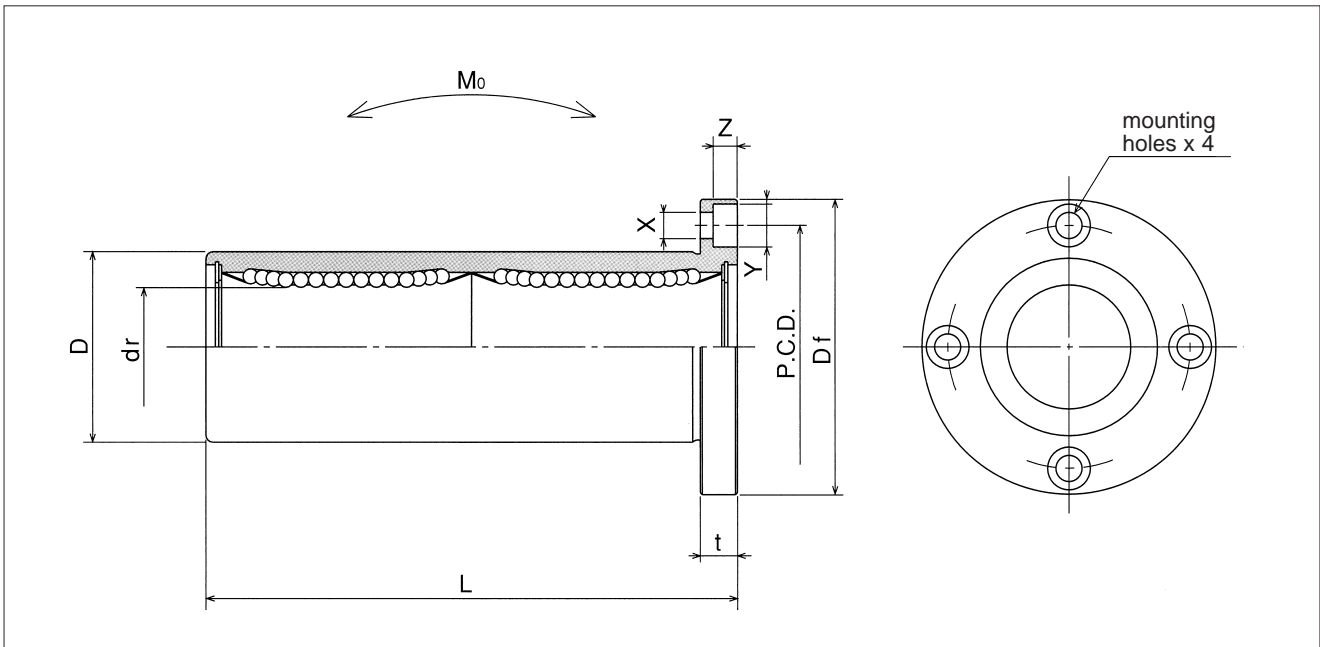
KBF-W TYPE

— Round Flange Double-Wide Type —

This type is a metric dimension series generally used in Europe.



part number				dr		D		L
standard		anticorrosion		mm	tolerance	mm	tolerance	±0.3 mm
steel retainer	resin retainer	stainless retainer	resin retainer		μm		μm	
KBF 8W	KBF 8GW	KBSF 8W	KBSF 8GW	8	+ 9	16	0/- 13	46
KBF12W	KBF12GW	KBSF12W	KBSF12GW	12	- 1	22	0	61
KBF16W	KBF16GW	KBSF16W	KBSF16GW	16	+11	26	-16	68
KBF20W	KBF20GW	KBSF20W	KBSF20GW	20	- 1	32	0	80
KBF25W	KBF25GW	KBSF25W	KBSF25GW	25	+13	40	-19	112
KBF30W	KBF30GW	KBSF30W	KBSF30GW	30	- 2	47	-19	123
KBF40W	KBF40GW	KBSF40W	KBSF40GW	40	+16	62	0	151
KBF50W	KBF50GW	KBSF50W	KBSF50GW	50	- 4	75	-22	192
KBF60W	KBF60GW	KBSF60W	KBSF60GW	60	- 4	90	0/-25	209



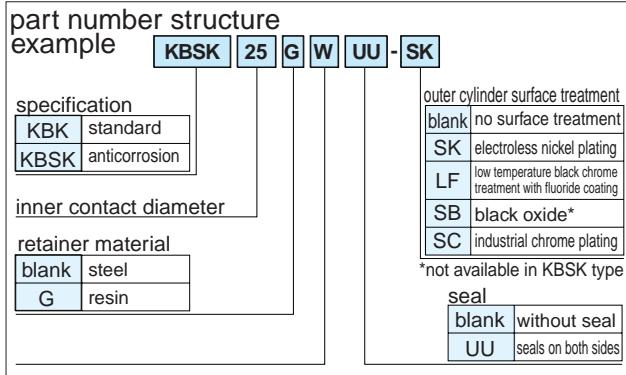
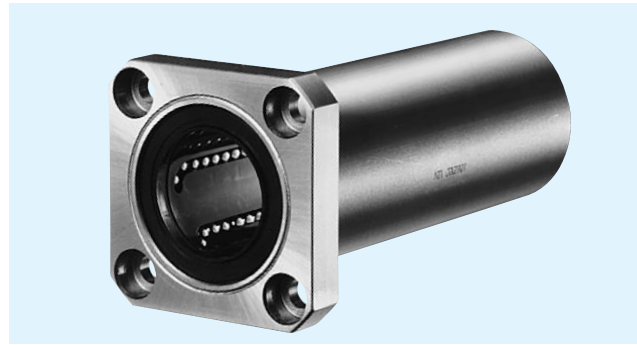
major dimensions				eccentricity	perpendicularity	basic load rating		allowable static moment	mass	shaft diameter
flange						dynamic	static			
Df	t	P.C.D.	X×Y×Z	μm	μm	C	Co	Mo	g	mm
mm	mm	mm	mm			N	N	N·m		
32	5	24	3.5×6×3.1	15	15	421	804	4.3	59	8
42	6	32	4.5×7.5×4.1			813	1,570	11.7	110	12
46	6	36	4.5×7.5×4.1			921	1,780	14.2	160	16
54	8	43	5.5×9×5.1	17	17	1,370	2,740	25.0	260	20
62	8	51	5.5×9×5.1			1,570	3,140	44.0	540	25
76	10	62	6.6×11×6.1			2,500	5,490	78.9	815	30
98	13	80	9×14×8.1	20	20	3,430	8,040	147	1,805	40
112	13	94	9×14×8.1			6,080	15,900	396	2,820	50
134	18	112	11×17×11.1			7,550	20,000	487	4,920	60

1N≐0.102kgf 1N·m≐0.102kgf·m

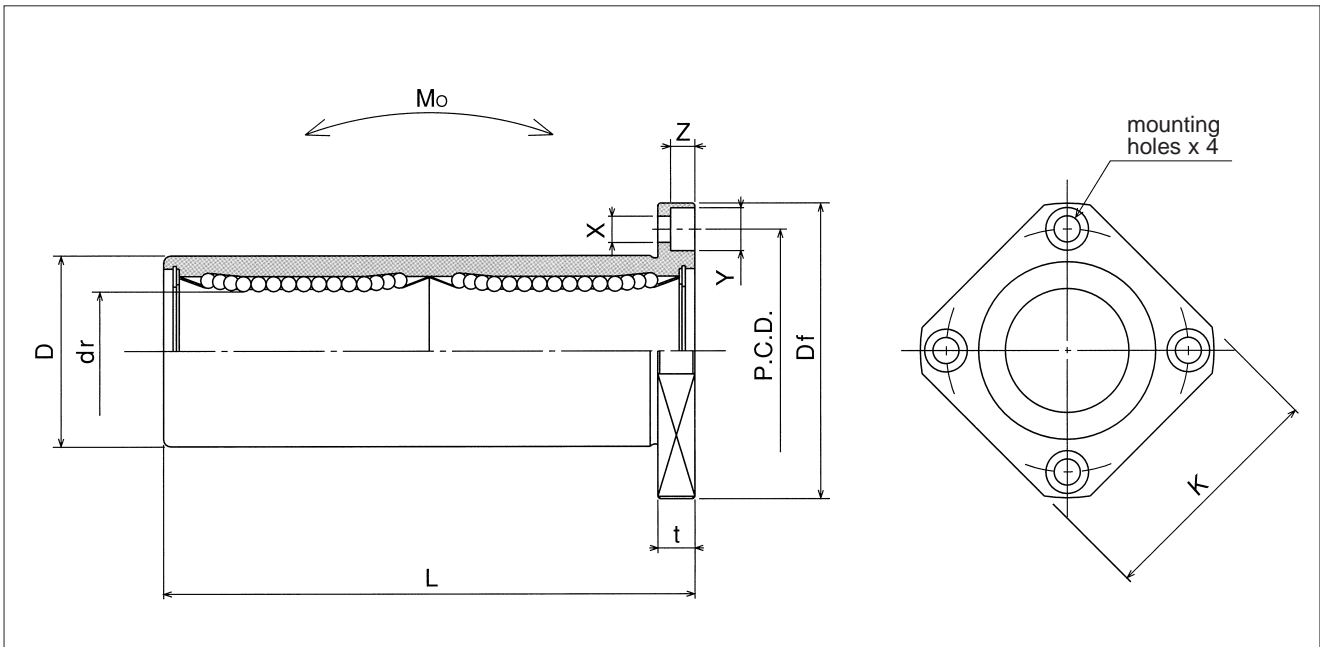
KBK-W TYPE

— Square Flange Double-Wide Type —

This type is a metric dimension series generally used in Europe.



part number									
standard		anticorrosion		dr		D		L	Df
steel retainer	resin retainer	stainless retainer	resin retainer	mm	tolerance μm	mm	tolerance μm	±0.3 mm	mm
KBK 8W	KBK 8GW	KBSK 8W	KBSK 8GW	8	+ 9	16	0/-13	46	32
KBK12W	KBK12GW	KBSK12W	KBSK12GW	12	- 1	22	0	61	42
KBK16W	KBK16GW	KBSK16W	KBSK16GW	16	+11	26	-16	68	46
KBK20W	KBK20GW	KBSK20W	KBSK20GW	20	- 1	32	0	80	54
KBK25W	KBK25GW	KBSK25W	KBSK25GW	25	+13	40	-19	112	62
KBK30W	KBK30GW	KBSK30W	KBSK30GW	30	- 2	47	0	123	76
KBK40W	KBK40GW	KBSK40W	KBSK40GW	40	+16	62	0	151	98
KBK50W	KBK50GW	KBSK50W	KBSK50GW	50	- 4	75	-22	192	112
KBK60W	KBK60GW	KBSK60W	KBSK60GW	60		90	0/-25	209	134



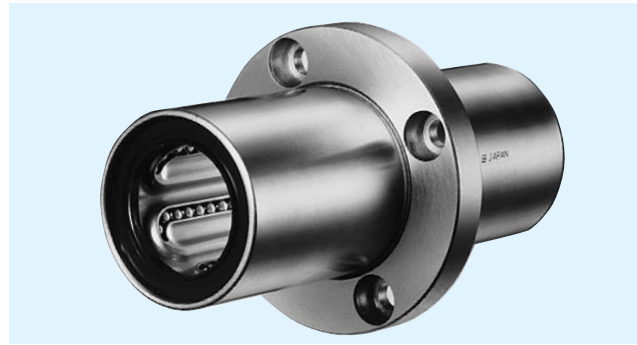
major dimensions				eccentricity	perpendicularity	basic load rating		allowable static moment	mass	shaft diameter
flange						dynamic	static			
K	t	P.C.D.	X×Y×Z	μm	μm	C	Co	Mo	g	mm
mm	mm	mm	mm			N	N	N·m		
25	5	24	3.5×6×3.1	15	15	421	804	4.3	51	8
32	6	32	4.5×7.5×4.1			813	1,570	11.7	90	12
35	6	36	4.5×7.5×4.1			921	1,780	14.2	135	16
42	8	43	5.5×9×5.1	17	17	1,370	2,740	25.0	225	20
50	8	51	5.5×9×5.1			1,570	3,140	44.0	500	25
60	10	62	6.6×11×6.1			2,500	5,490	78.9	720	30
75	13	80	9×14×8.1	20	20	3,430	8,040	147	1,600	40
88	13	94	9×14×8.1			6,080	15,900	396	2,620	50
106	18	112	11×17×11.1			7,550	20,000	487	4,480	60

1N≐0.102kgf 1N·m≐0.102kgf·m

KBFC TYPE

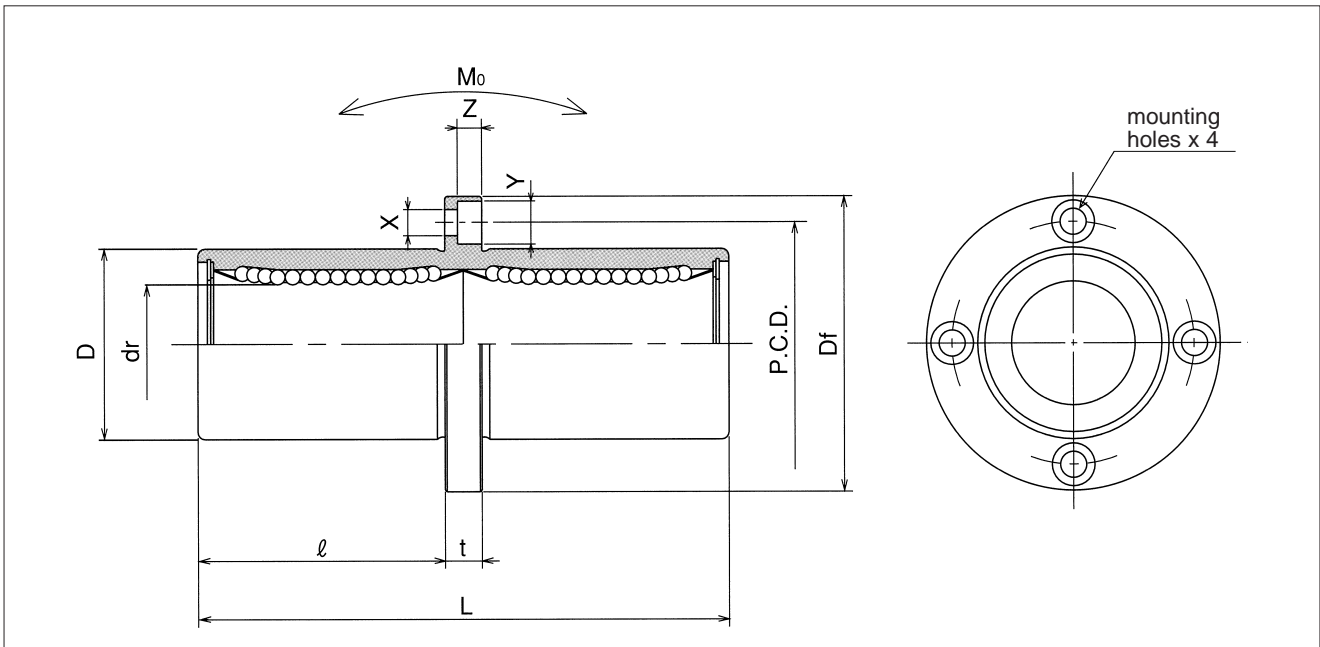
– Center Mount Round Flange Type –

This type is a metric dimension series generally used in Europe.



part number structure		example		KBSFC		25	G	UU	-	SK
specification		inner contact diameter		retainer material		outer cylinder surface treatment		seal		
KBFC	standard			blank	steel	blank	no surface treatment	blank	without seal	
KBSFC	anticorrosion			G	resin	SK	electroless nickel plating	UU	seals on both sides	
						LF	low temperature black chrome treatment with fluoride coating			
						SB	black oxide*			
						SC	industrial chrome plating			
						*not available in KBSFC type				

part number									
standard		anticorrosion		dr		D		L	ℓ
steel retainer	resin retainer	stainless retainer	resin retainer	mm	tolerance μm	mm	tolerance μm	± 0.3 mm	mm
KBFC 8	KBFC 8G	KBSFC 8	KBSFC 8G	8	+ 9	16	0/-13	46	20.5
KBFC12	KBFC12G	KBSFC12	KBSFC12G	12	- 1	22	0	61	27.5
KBFC16	KBFC16G	KBSFC16	KBSFC16G	16	+11	26	-16	68	31
KBFC20	KBFC20G	KBSFC20	KBSFC20G	20	- 1	32	0	80	36
KBFC25	KBFC25G	KBSFC25	KBSFC25G	25	+13	40	-19	112	52
KBFC30	KBFC30G	KBSFC30	KBSFC30G	30	- 2	47	-19	123	56.5
KBFC40	KBFC40G	KBSFC40	KBSFC40G	40	+16	62	0	151	69
KBFC50	KBFC50G	KBSFC50	KBSFC50G	50	- 4	75	-22	192	89.5
KBFC60	KBFC60G	KBSFC60	KBSFC60G	60	- 4	90	0/-25	209	95.5



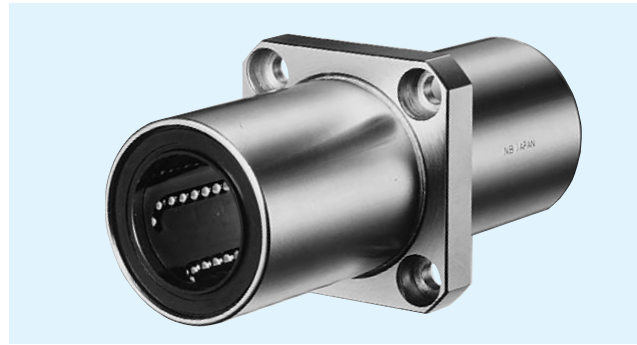
major dimensions				eccentricity	perpendicularity	basic load rating		allowable static moment	mass	shaft diameter
flange						dynamic	static			
Df	t	P.C.D.	X×Y×Z	C	Co			Mo	g	mm
mm	mm	mm	mm	μm	μm	N	N	N·m		
32	5	24	3.5×6×3.1	15	15	421	804	4.3	59	8
42	6	32	4.5×7.5×4.1			813	1,570	11.7	110	12
46	6	36	4.5×7.5×4.1			921	1,780	14.2	160	16
54	8	43	5.5×9×5.1	17	17	1,370	2,740	25.0	260	20
62	8	51	5.5×9×5.1			1,570	3,140	44.0	540	25
76	10	62	6.6×11×6.1			2,500	5,490	78.9	815	30
98	13	80	9×14×8.1	20	20	3,430	8,040	147	1,805	40
112	13	94	9×14×8.1			6,080	15,900	396	2,820	50
134	18	112	11×17×11.1			7,550	20,000	487	4,920	60

1N≐0.102kgf 1N·m≐0.102kgf·m

KBKC TYPE

– Center Mount Square Flange Type –

This type is a metric dimension series generally used in Europe.



part number structure											
example	KBSKC 25 G UU -SK										
specification	<table border="1"> <tr> <td>KBKC</td> <td>standard</td> </tr> <tr> <td>KBSKC</td> <td>anticorrosion</td> </tr> </table>	KBKC	standard	KBSKC	anticorrosion						
KBKC	standard										
KBSKC	anticorrosion										
inner contact diameter											
retainer material	<table border="1"> <tr> <td>blank</td> <td>steel</td> </tr> <tr> <td>G</td> <td>resin</td> </tr> </table>	blank	steel	G	resin						
blank	steel										
G	resin										
outer cylinder surface treatment	<table border="1"> <tr> <td>blank</td> <td>no surface treatment</td> </tr> <tr> <td>SK</td> <td>electroless nickel plating</td> </tr> <tr> <td>LF</td> <td>low temperature black chrome treatment with fluoride coating</td> </tr> <tr> <td>SB</td> <td>black oxide*</td> </tr> <tr> <td>SC</td> <td>industrial chrome plating</td> </tr> </table>	blank	no surface treatment	SK	electroless nickel plating	LF	low temperature black chrome treatment with fluoride coating	SB	black oxide*	SC	industrial chrome plating
blank	no surface treatment										
SK	electroless nickel plating										
LF	low temperature black chrome treatment with fluoride coating										
SB	black oxide*										
SC	industrial chrome plating										
seal	<table border="1"> <tr> <td>blank</td> <td>without seal</td> </tr> <tr> <td>UU</td> <td>seals on both sides</td> </tr> </table>	blank	without seal	UU	seals on both sides						
blank	without seal										
UU	seals on both sides										

*not available in KBSKC type

part number									
standard		anticorrosion		dr		D		L	l
steel retainer	resin retainer	stainless retainer	resin retainer	mm	tolerance μm	mm	tolerance μm	± 0.3 mm	mm
KBKC 8	KBKC 8G	KBSKC 8	KBSKC 8G	8	+ 9	16	0/-13	46	20.5
KBKC12	KBKC12G	KBSKC12	KBSKC12G	12	- 1	22	0	61	27.5
KBKC16	KBKC16G	KBSKC16	KBSKC16G	16	+11	26	-16	68	31
KBKC20	KBKC20G	KBSKC20	KBSKC20G	20	- 1	32	0	80	36
KBKC25	KBKC25G	KBSKC25	KBSKC25G	25	+13	40	-19	112	52
KBKC30	KBKC30G	KBSKC30	KBSKC30G	30	- 2	47		123	56.5
KBKC40	KBKC40G	KBSKC40	KBSKC40G	40	+16	62	0	151	69
KBKC50	KBKC50G	KBSKC50	KBSKC50G	50	- 4	75	-22	192	89.5
KBKC60	KBKC60G	KBSKC60	KBSKC60G	60		90	0/-25	209	95.5

