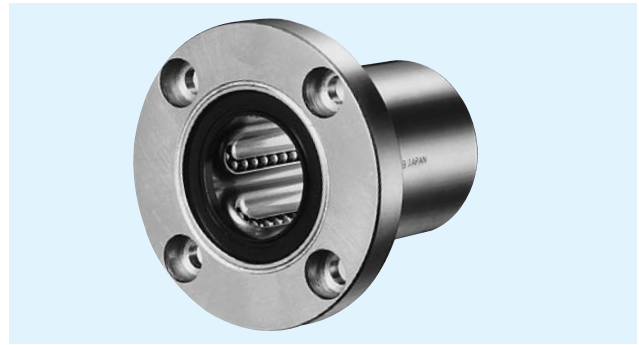


SWF TYPE

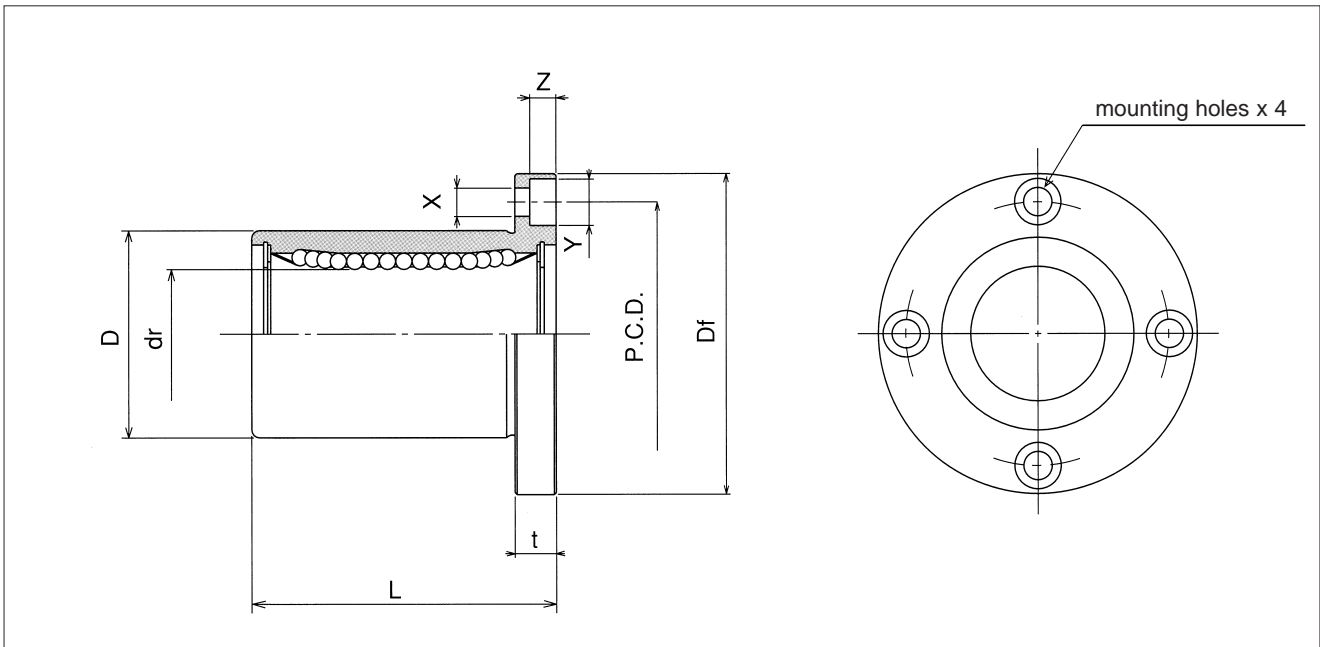
— Round Flange Type —

This type is an inch dimension series mainly used in the U.S.



part number structure											
example	SWSF 16 G UU - SK										
specification	<table border="1"> <tr> <td>SWF</td> <td>standard</td> </tr> <tr> <td>SWSF</td> <td>anticorrosion</td> </tr> </table>	SWF	standard	SWSF	anticorrosion						
SWF	standard										
SWSF	anticorrosion										
inner contact diameter											
retainer material	<table border="1"> <tr> <td>blank</td> <td>steel</td> </tr> <tr> <td>G</td> <td>resin</td> </tr> </table>	blank	steel	G	resin						
blank	steel										
G	resin										
outer cylinder surface treatment	<table border="1"> <tr> <td>blank</td> <td>no surface treatment</td> </tr> <tr> <td>SK</td> <td>electroless nickel plating</td> </tr> <tr> <td>LF</td> <td>low temperature black chrome treatment with fluoride coating</td> </tr> <tr> <td>SB</td> <td>black oxide*</td> </tr> <tr> <td>SC</td> <td>industrial chrome plating</td> </tr> </table>	blank	no surface treatment	SK	electroless nickel plating	LF	low temperature black chrome treatment with fluoride coating	SB	black oxide*	SC	industrial chrome plating
blank	no surface treatment										
SK	electroless nickel plating										
LF	low temperature black chrome treatment with fluoride coating										
SB	black oxide*										
SC	industrial chrome plating										
*not available in SWSF type seal											
seal	<table border="1"> <tr> <td>blank</td> <td>without seal</td> </tr> <tr> <td>UU</td> <td>seals on both sides</td> </tr> </table>	blank	without seal	UU	seals on both sides						
blank	without seal										
UU	seals on both sides										

part number								
standard		anticorrosion		dr		D		L
steel retainer	resin retainer	stainless retainer	resin retainer	inch mm	tolerance inch/ μ m	inch mm	tolerance inch/ μ m	\pm .012 \pm 0.3 inch mm
SWF 4	SWF 4G	SWSF 4	SWSF 4G	.2500 6.350	0 - .00040	.5000 12.700	⁰ - .00050 ₀ -13	.7500 19.050
SWF 6	SWF 6G	SWSF 6	SWSF 6G	.3750 9.525		.6250 15.875	⁰ - .00065 ₀	.8750 22.225
SWF 8	SWF 8G	SWSF 8	SWSF 8G	.5000 12.700	0 - 9	.8750 22.225	⁰ - .00065 ₀ -16	1.2500 31.750
SWF10	SWF10G	SWSF10	SWSF10G	.6250 15.875		1.1250 28.575		1.5000 38.100
SWF12	SWF12G	SWSF12	SWSF12G	.7500 19.050	0 - .00040	1.2500 31.750	⁰ - .00075 ₀	1.6250 41.275
SWF16	SWF16G	SWSF16	SWSF16G	1.0000 25.400	0 -10	1.5625 39.688	⁰ -19	2.2500 57.150
SWF20	SWF20G	SWSF20	SWSF20G	1.2500 31.750	0 - .00050	2.0000 50.800	⁰ - .00090 ₀	2.6250 66.675
SWF24	SWF24G	SWSF24	SWSF24G	1.5000 38.100	0 -12	2.3750 60.325	⁰ -22	3.0000 76.200
SWF32	SWF32G	SWSF32	SWSF32G	2.0000 50.800	0 -15	3.0000 76.200	⁰ - .00100 ₀ -25	4.0000 101.600
SWF40	—	—	—	2.5000 63.500	0 - .00060	3.7500 95.250	⁰ -25	5.0000 127.000
SWF48	—	—	—	3.0000 76.200	0 -15	4.5000 114.300		6.0000 152.400
SWF64	—	—	—	4.0000 101.600	⁰ - .00080 ₀ -20	6.0000 152.400	⁰ - .00115 ₀ -29	8.0000 203.200



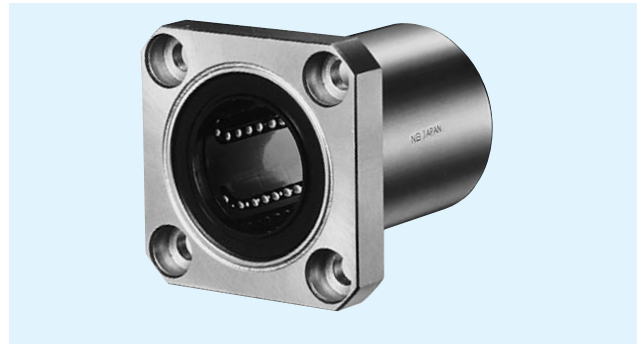
major dimensions				eccentricity	perpendicularity	basic load rating		mass	shaft diameter		
flange						inch	inch			C	Co
Df inch mm	t inch mm	P.C.D. inch mm	X×Y×Z inch mm	μm	μm	N	N		mm		
1.2500 31.750	0.219 5.556	.8750 22.225	.1560 × .2500 × .1410 3.969 × 6.350 × 3.572	.0005	.0005	206	265	32	1/4 6.350		
1.5000 38.100	.2500 6.350	1.0620 26.988	.1875 × .2970 × .1720 4.763 × 7.541 × 4.366			225	314	47	3/8 9.525		
1.7500 44.450	.2500 6.350	1.312 33.338	.1875 × .2970 × .1720 4.763 × 7.541 × 4.366			12	12	510	784	88	1/2 12.700
2.0000 50.800	.2500 6.350	1.5620 39.688	.1875 × .2970 × .1720 4.763 × 7.541 × 4.366	.0006	.0006	774	1,180	140	5/8 15.875		
2.1875 55.563	.3125 7.938	1.7180 43.660	.2187 × .3440 × .2030 5.556 × 8.731 × 5.159			862	1,370	190	3/4 19.050		
2.5000 63.500	.3125 7.938	2.0310 51.594	.2187 × .3440 × .2030 5.556 × 8.731 × 5.159			15	15	980	1,570	325	1 25.400
3.1250 79.375	.3750 9.525	2.5625 65.088	.2812 × .4060 × .2656 7.144 × 10.319 × 6.747	.0008	.0008	1,570	2,740	665	1-1/4 31.750		
3.7500 95.250	.5000 12.700	3.0625 77.788	.3440 × .5000 × .3280 8.731 × 12.700 × 8.334			20	20	2,180	4,020	1,100	1-1/2 38.100
4.3750 111.125	.5000 12.700	3.6875 93.662	.3440 × .5000 × .3280 8.731 × 12.700 × 8.334			.0010	.0010	3,820	7,940	1,760	2 50.800
5.3750 136.525	.7500 19.050	4.5625 115.887	.4062 × .6250 × .3750 10.319 × 15.875 × 9.525	4,700	10,000			3,570	2-1/2 63.500		
6.1250 155.575	.7500 19.050	5.3125 134.937	.4062 × .6250 × .3750 10.319 × 15.875 × 9.525	25	25			7,350	16,000	5,600	3 76.200
8.0000 203.200	.8750 22.225	7.0000 177.800	.5000 × .7125 × .5000 12.700 × 18.097 × 12.700	.0012 30	.0012 30	14,100	34,800	12,000	4 101.600		

1N ≅ 0.225lbf 1kg ≅ 2.205lbs

SWK TYPE

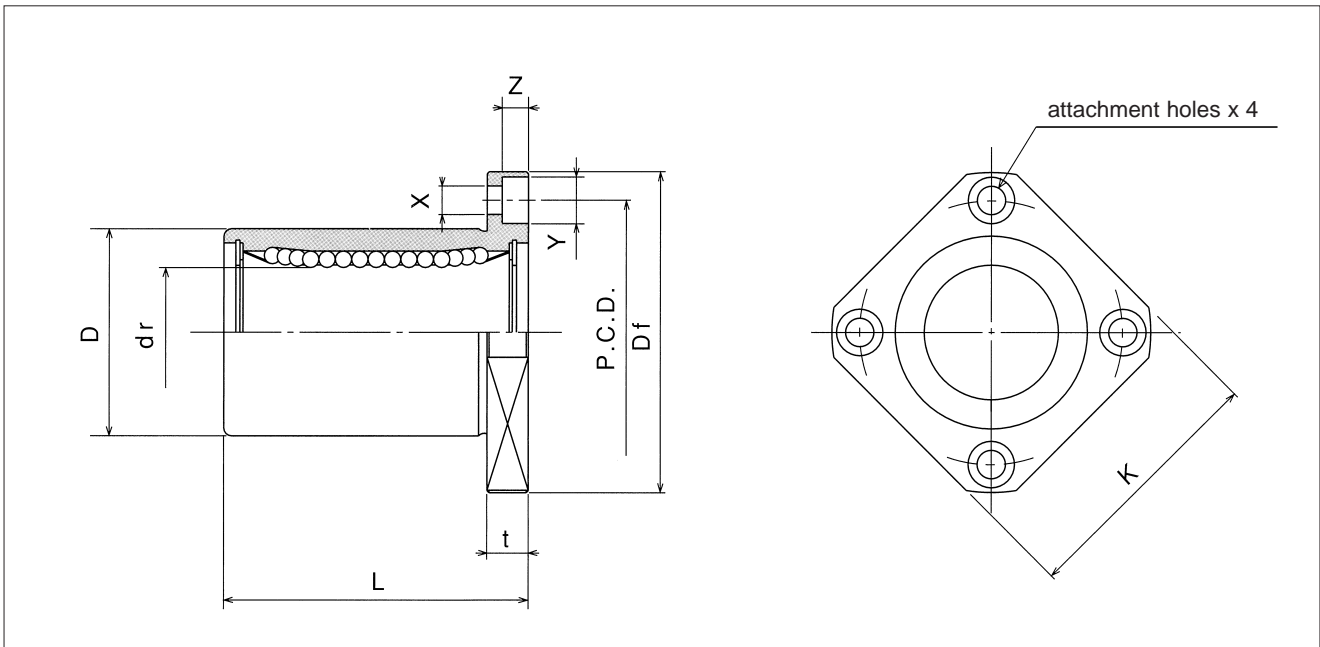
— Square Flange Type —

This type is an inch dimension series mainly used in the U.S.



part number structure											
example	SWSK 16 G UU - SK										
specification	<table border="1"> <tr> <td>SWK</td> <td>standard</td> </tr> <tr> <td>SWSK</td> <td>anticorrosion</td> </tr> </table>	SWK	standard	SWSK	anticorrosion						
SWK	standard										
SWSK	anticorrosion										
inner contact diameter											
retainer material	<table border="1"> <tr> <td>blank</td> <td>steel</td> </tr> <tr> <td>G</td> <td>resin</td> </tr> </table>	blank	steel	G	resin						
blank	steel										
G	resin										
outer cylinder surface treatment	<table border="1"> <tr> <td>blank</td> <td>no surface treatment</td> </tr> <tr> <td>SK</td> <td>electroless nickel plating</td> </tr> <tr> <td>LF</td> <td>low temperature black chrome treatment with fluoride coating</td> </tr> <tr> <td>SB</td> <td>black oxide*</td> </tr> <tr> <td>SC</td> <td>industrial chrome plating</td> </tr> </table> <p>*not available in SWSK type</p>	blank	no surface treatment	SK	electroless nickel plating	LF	low temperature black chrome treatment with fluoride coating	SB	black oxide*	SC	industrial chrome plating
blank	no surface treatment										
SK	electroless nickel plating										
LF	low temperature black chrome treatment with fluoride coating										
SB	black oxide*										
SC	industrial chrome plating										
seal	<table border="1"> <tr> <td>blank</td> <td>without seal</td> </tr> <tr> <td>UU</td> <td>seals on both sides</td> </tr> </table>	blank	without seal	UU	seals on both sides						
blank	without seal										
UU	seals on both sides										

part number								
standard		anticorrosion		dr		D		L
steel retainer	resin retainer	stainless retainer	resin retainer	inch mm	tolerance inch/ μ m	inch mm	tolerance inch/ μ m	± 0.12 ± 0.3 inch mm
SWK 4	SWK 4G	SWSK 4	SWSK 4G	.2500 6.350	0 - .00040	.5000 12.700	$^{0}_{-0.00050}$ $^{0}_{-13}$.7500 19.050
SWK 6	SWK 6G	SWSK 6	SWSK 6G	.3750 9.525		.6250 15.875	$^{0}_{-0.00065}$.8750 22.225
SWK 8	SWK 8G	SWSK 8	SWSK 8G	.5000 12.700	0 - 9	.8750 22.225	$^{0}_{-0.00065}$ $^{0}_{-16}$	1.2500 31.750
SWK10	SWK10G	SWSK10	SWSK10G	.6250 15.875		1.1250 28.575		1.5000 38.100
SWK12	SWK12G	SWSK12	SWSK12G	.7500 19.050	0 - .00040	1.2500 31.750	$^{0}_{-0.00075}$	1.6250 41.275
SWK16	SWK16G	SWSK16	SWSK16G	1.0000 25.400	0 - 10	1.5625 39.688	$^{0}_{-0.00075}$ $^{0}_{-19}$	2.2500 57.150
SWK20	SWK20G	SWSK20	SWSK20G	1.2500 31.750	0 - .00050	2.0000 50.800	$^{0}_{-0.00090}$	2.6250 66.675
SWK24	SWK24G	SWSK24	SWSK24G	1.5000 38.100	0 - 12	2.3750 60.325	$^{0}_{-0.00115}$ $^{0}_{-22}$	3.0000 76.200
SWK32	SWK32G	SWSK32	SWSK32G	2.0000 50.800	0 - 15	3.0000 76.200	$^{0}_{-0.00115}$ $^{0}_{-25}$	4.0000 101.600
SWK40	—	—	—	2.5000 63.500	0 - .00060	3.7500 95.250	$^{0}_{-0.00115}$ $^{0}_{-25}$	5.0000 127.000
SWK48	—	—	—	3.0000 76.200	0 - 20	4.5000 114.300	$^{0}_{-0.00115}$ $^{0}_{-29}$	6.0000 152.400
SWK64	—	—	—	4.0000 101.600	0 - 20	6.0000 152.400	$^{0}_{-0.00115}$ $^{0}_{-29}$	8.0000 203.200



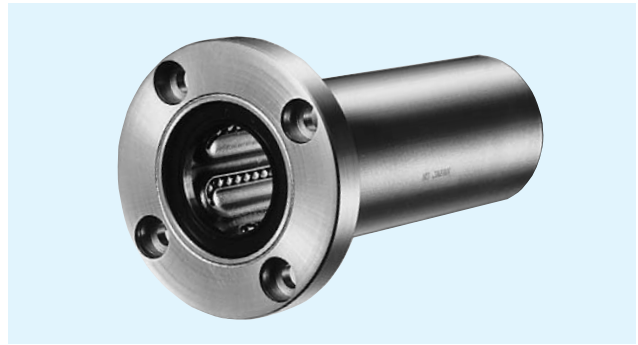
major dimensions					eccentricity	perpendicularity	basic load rating		mass	shaft diameter		
flange							inch	inch			dynamic	static
Df	K	t	P.C.D.	X×Y×Z	μm	μm	C	Co	g	inch		
inch	inch	inch	inch	inch			N	N		mm		
1.2500 31.750	1.0000 25.400	0.219 5.556	.8750 22.225	.1560 × .2500 × .1410 3.969 × 6.350 × 3.572	.0005	.0005	206	265	25	1/4 6.350		
1.5000 38.100	1.2500 31.750	.2500 6.350	1.0620 26.988	.1875 × .2970 × .1720 4.763 × 7.541 × 4.366			225	314	32	3/8 9.525		
1.7500 44.450	1.3750 34.925	.2500 6.350	1.312 33.338	.1875 × .2970 × .1720 4.763 × 7.541 × 4.366			12	12	510	784	68	1/2 12.700
2.0000 50.800	1.5000 38.100	.2500 6.350	1.5620 39.688	.1875 × .2970 × .1720 4.763 × 7.541 × 4.366			774	1,180	124	5/8 15.875		
2.1875 55.563	1.6875 42.863	.3125 7.938	1.7180 43.660	.2187 × .3440 × .2030 5.556 × 8.731 × 5.159	.0006	.0006	862	1,370	150	3/4 19.050		
2.5000 63.500	2.0000 50.800	.3125 7.938	2.0310 51.594	.2187 × .3440 × .2030 5.556 × 8.731 × 5.159			15	15	980	1,570	280	1 25.400
3.1250 79.375	2.5000 63.500	.3750 9.525	2.5625 65.088	.2812 × .4060 × .2656 7.144 × 10.319 × 6.747	.0008	.0008	1,570	2,740	580	1-1/4 31.750		
3.7500 95.250	3.0000 76.200	.5000 12.700	3.0625 77.788	.3440 × .5000 × .3280 8.731 × 12.700 × 8.334			2,180	4,020	930	1-1/2 38.100		
4.3750 111.125	3.5000 88.900	.5000 12.700	3.6875 93.662	.3440 × .5000 × .3280 8.731 × 12.700 × 8.334	20	20	3,820	7,940	1,580	2 50.800		
5.3750 136.525	4.3750 111.125	.7500 19.050	4.5625 115.887	.4062 × .6250 × .3750 10.319 × 15.875 × 9.525	.0010	.0010	4,700	10,000	3,200	2-1/2 63.500		
6.1250 155.575	5.0000 127.000	.7500 19.050	5.3125 134.937	.4062 × .6250 × .3750 10.319 × 15.875 × 9.525			25	25	7,350	16,000	5,000	3 76.200
8.0000 203.200	6.7500 171.450	.8750 22.225	7.0000 177.800	.5000 × .7125 × .5000 12.700 × 18.097 × 12.700	.0012 30	.0012 30	14,100	34,800	11,300	4 101.600		

1N ≅ 0.225lbf 1kg ≅ 2.205lbs

SWF-W TYPE

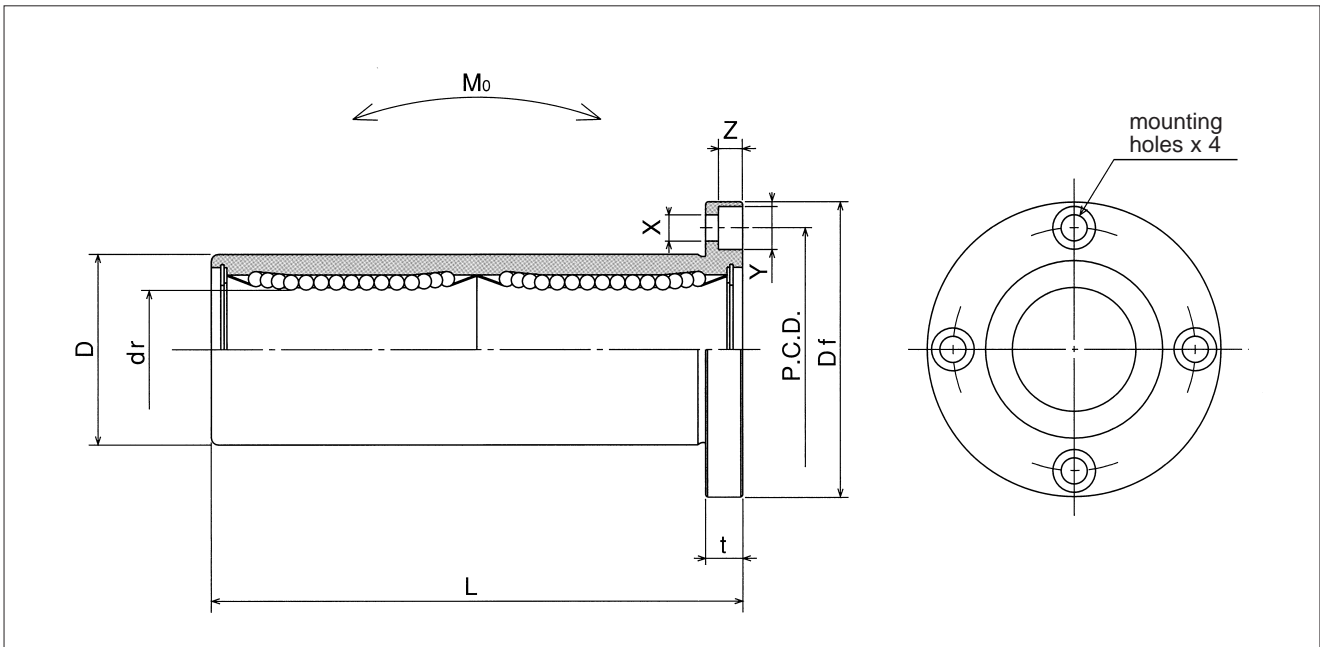
— Round Flange Double-Wide Type —

This type is an inch dimension series mainly used in the U.S.



part number structure													
example	SWSF 16 G W UU - SK												
specification	<table border="1"> <tr> <td>SWF</td> <td>standard</td> </tr> <tr> <td>SWSF</td> <td>anticorrosion</td> </tr> </table>	SWF	standard	SWSF	anticorrosion								
SWF	standard												
SWSF	anticorrosion												
inner contact diameter													
retainer material	<table border="1"> <tr> <td>blank</td> <td>steel</td> </tr> <tr> <td>G</td> <td>resin</td> </tr> </table>	blank	steel	G	resin								
blank	steel												
G	resin												
double-wide type													
	<table border="1"> <tr> <td colspan="2">outer cylinder surface treatment</td> </tr> <tr> <td>blank</td> <td>no surface treatment</td> </tr> <tr> <td>SK</td> <td>electroless nickel plating</td> </tr> <tr> <td>LF</td> <td>low temperature black chrome treatment with fluoride coating</td> </tr> <tr> <td>SB</td> <td>black oxide*</td> </tr> <tr> <td>SC</td> <td>industrial chrome plating</td> </tr> </table> <p>*not available in SWSF type</p>	outer cylinder surface treatment		blank	no surface treatment	SK	electroless nickel plating	LF	low temperature black chrome treatment with fluoride coating	SB	black oxide*	SC	industrial chrome plating
outer cylinder surface treatment													
blank	no surface treatment												
SK	electroless nickel plating												
LF	low temperature black chrome treatment with fluoride coating												
SB	black oxide*												
SC	industrial chrome plating												
	<table border="1"> <tr> <td colspan="2">seal</td> </tr> <tr> <td>blank</td> <td>without seal</td> </tr> <tr> <td>UU</td> <td>seals on both sides</td> </tr> </table>	seal		blank	without seal	UU	seals on both sides						
seal													
blank	without seal												
UU	seals on both sides												

part number								
standard		anticorrosion		dr		D		L
steel retainer	resin retainer	stainless retainer	resin retainer	inch	tolerance	inch	tolerance	±.012 ±0.3 inch mm
				mm	inch/ μ m	mm	inch/ μ m	
SWF 4W	SWF 4GW	SWSF 4W	SWSF 4GW	.2500 6.350	0 -.00040	.5000 12.700	⁰ -.00050 ₀ -13	1.3750 34.925
SWF 6W	SWF 6GW	SWSF 6W	SWSF 6GW	.3750 9.525		0 -10	.6250 15.875	0
SWF 8W	SWF 8GW	SWSF 8W	SWSF 8GW	.5000 12.700	0 -10	.8750 22.225	-.00065 0 -16	2.3750 60.325
SWF10W	SWF10GW	SWSF10W	SWSF10GW	.6250 15.875		1.1250 28.575		2.8125 71.438
SWF12W	SWF12GW	SWSF12W	SWSF12GW	.7500 19.050	0 -.00050	1.2500 31.750	0 -.00075	3.0937 78.581
SWF16W	SWF16GW	SWSF16W	SWSF16GW	1.0000 25.400	0 -12	1.5625 39.688	0 -19	4.2813 108.744
SWF20W	SWF20GW	SWSF20W	SWSF20GW	1.2500 31.750	0 -.00060	2.0000 50.800	0 -.00090	5.0000 127.000
SWF24W	SWF24GW	SWSF24W	SWSF24GW	1.5000 38.100	0 -15	2.3750 60.325	0 -22	5.6875 144.463
SWF32W	SWF32GW	SWSF32W	SWSF32GW	2.0000 50.800		3.0000 76.200	⁰ -.00100 ₀ -25	7.7500 196.850



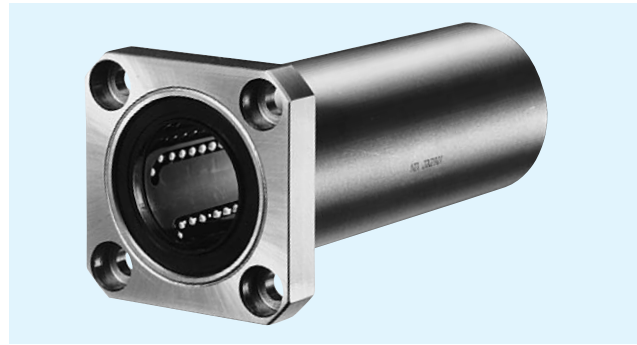
major dimensions				eccentricity	perpendicularity	basic load rating		allowable static moment	mass	shaft diameter				
flange						inch	inch				dynamic	static		
Df inch mm	t inch mm	P.C.D. inch mm	X×Y×Z inch mm	μm	μm	C N	Co N	Mo N·m	g	inch mm				
1.2500 31.750	.2188 5.556	.8750 22.225	.1563 × .2500 × .1406 3.969 × 6.350 × 3.572	.0006	.0006	323	530	2.0	40	1/4 6.350				
1.5000 38.100	.2500 6.350	1.0625 26.988	.1875 × .2969 × .1719 4.763 × 7.541 × 4.366			353	630			2.7	60	3/8 9.525		
1.7500 44.450	.2500 6.350	1.3125 33.338	.1875 × .2969 × .1719 4.763 × 7.541 × 4.366			15	15			813	1,570	11.5	126	1/2 12.700
2.0000 50.800	.2500 6.350	1.5625 39.688	.1875 × .2969 × .1719 4.763 × 7.541 × 4.366	.0008	.0008	1,230	2,350	20.0	215	5/8 15.875				
2.1875 55.563	.3125 7.938	1.7188 43.656	.2188 × .3438 × .2031 5.556 × 8.731 × 5.159			1,370	2,740			26.5	280	3/4 19.050		
2.5000 63.500	.3125 7.938	2.0313 51.594	.2188 × .3438 × .2031 5.556 × 8.731 × 5.159			20	20			1,570	3,140	41.2	515	1 25.400
3.1250 79.375	.3750 9.525	2.5625 65.088	.2813 × .4063 × .2656 7.144 × 10.319 × 6.747	.0010	.0010	2,500	5,490	84.8	1,020	1-1/4 31.750				
3.7500 95.250	.5000 12.700	3.0625 77.788	.3437 × .5000 × .3281 8.731 × 12.700 × 8.334			25	25			3,430	8,040	143	1,630	1-1/2 38.100
4.3750 111.125	.5000 12.700	3.6875 93.662	.3437 × .5000 × .3281 8.731 × 12.700 × 8.334			.0012 30	.0012 30			6,080	15,900	399	2,800	2 50.800

1N ≅ 0.225lbf 1N·m ≅ 0.738lb·ft

SWK-W TYPE

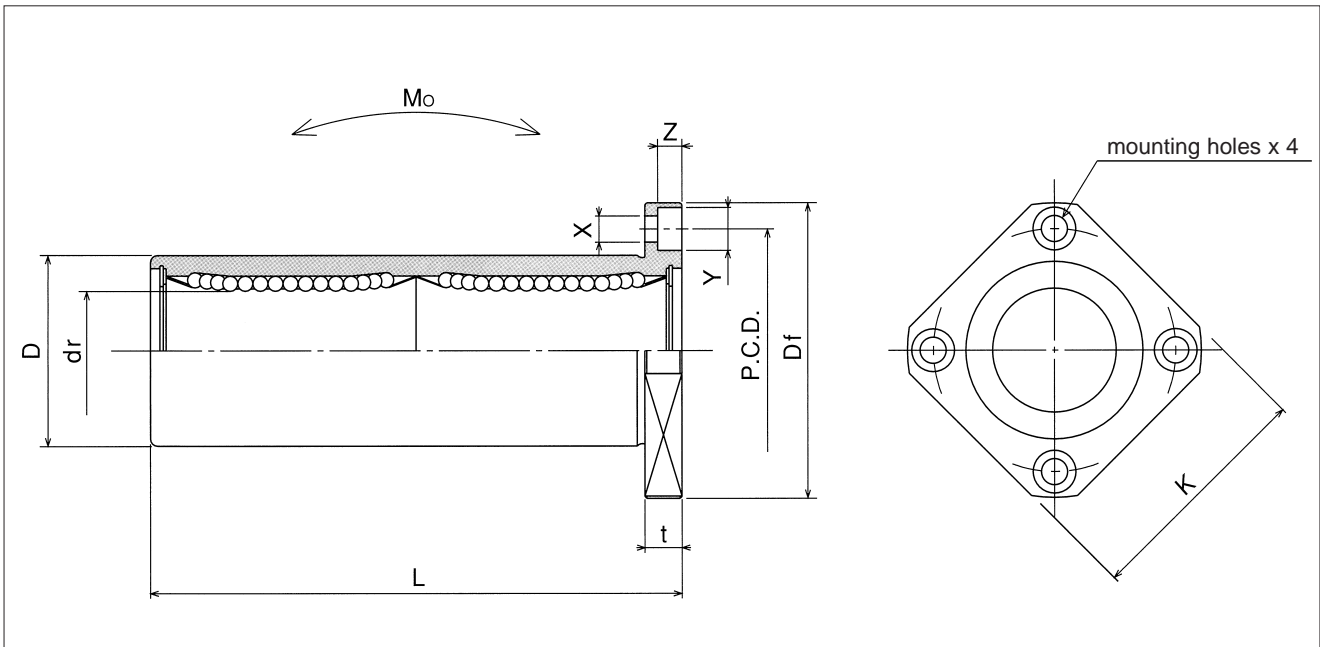
— Square Flange Double-Wide Type —

This type is an inch dimension series mainly used in the U.S.



part number structure example	
SWSK	16 G W UU - SK
specification	outer cylinder surface treatment
SWK standard	blank no surface treatment
SWSK anticorrosion	SK electroless nickel plating
inner contact diameter	LF low temperature black chrome treatment with fluoride coating
retainer material	SB black oxide*
blank steel	SC industrial chrome plating
G resin	*not available in SWSK type
double-wide type	seal
	blank without seal
	UU seals on both sides

part number				dr		D		L
standard		anticorrosion		inch	tolerance	inch	tolerance	± 0.12 ± 0.3 inch mm
steel retainer	resin retainer	stainless retainer	resin retainer	mm	inch/ μ m	mm	inch/ μ m	
SWK 4W	SWK 4GW	SWSK 4W	SWSK 4GW	.2500 6.350	0 -.00040	.5000 12.700	$^{0}_{-13}$ -.00050	1.3750 34.925
SWK 6W	SWK 6GW	SWSK 6W	SWSK 6GW	.3750 9.525		0 -10	.6250 15.875	0 -.00065
SWK 8W	SWK 8GW	SWSK 8W	SWSK 8GW	.5000 12.700	0 -10	.8750 22.225	0 -.00065	2.3750 60.325
SWK10W	SWK10GW	SWSK10W	SWSK10GW	.6250 15.875	0 -12	1.1250 28.575	0 -.00075	2.8125 71.438
SWK12W	SWK12GW	SWSK12W	SWSK12GW	.7500 19.050	0 -12	1.2500 31.750	0 -.00075	3.0937 78.581
SWK16W	SWK16GW	SWSK16W	SWSK16GW	1.0000 25.400	0 -15	1.5625 39.688	0 -.00090	4.2813 108.744
SWK20W	SWK20GW	SWSK20W	SWSK20GW	1.2500 31.750	0 -15	2.0000 50.800	0 -.00100	5.0000 127.000
SWK24W	SWK24GW	SWSK24W	SWSK24GW	1.5000 38.100	0 -15	2.3750 60.325	0 -.00100	5.6875 144.463
SWK32W	SWK32GW	SWSK32W	SWSK32GW	2.0000 50.800	0 -25	3.0000 76.200	0 -.00100	7.7500 196.850



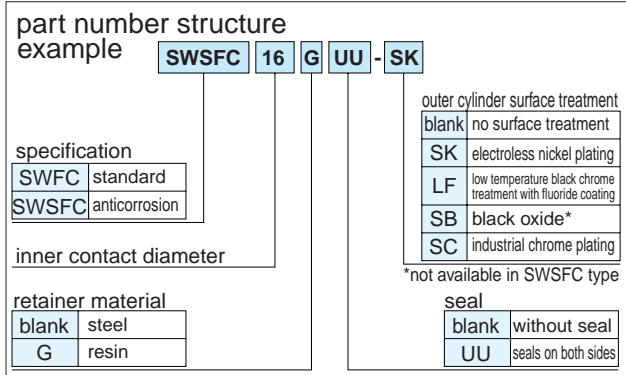
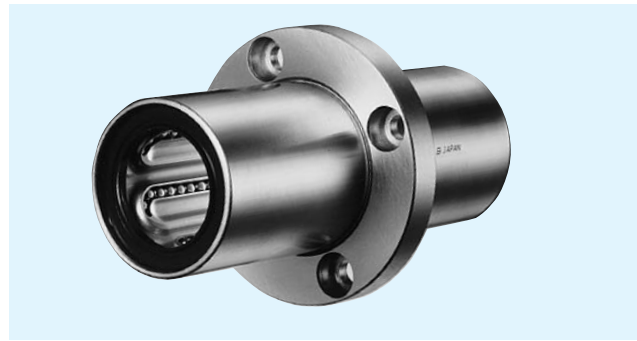
major dimensions					eccentricity inch μ m	perpen- dicularity inch μ m	basic load rating		allowable static moment Mo N·m	mass g	shaft diameter inch mm
flange							dynamic C N	static Co N			
Df inch mm	K inch mm	t inch mm	P.C.D. inch mm	X×Y×Z inch mm							
1.2500 31.750	1.0000 25.400	.2188 5.556	.8750 22.225	.1563 × .2500 × .1406 3.969 × 6.350 × 3.572	.0006	.0006	323	530	2.0	33	1/4 6.350
1.5000 38.100	1.2500 31.750	.2500 6.350	1.0625 26.988	.1875 × .2969 × .1719 4.763 × 7.541 × 4.366			353	630	2.7	45	3/8 9.525
1.7500 44.450	1.3750 34.925	.2500 6.350	1.3125 33.338	.1875 × .2969 × .1719 4.763 × 7.541 × 4.366			15	15	813	1,570	11.5
2.0000 50.800	1.5000 38.100	.2500 6.350	1.5625 39.688	.1875 × .2969 × .1719 4.763 × 7.541 × 4.366	.0008	.0008	1,230	2,350	20.0	200	5/8 15.875
2.1875 55.563	1.6875 42.863	.3125 7.938	1.7188 43.656	.2188 × .3438 × .2031 5.556 × 8.731 × 5.159			1,370	2,740	26.5	240	3/4 19.050
2.5000 63.500	2.0000 50.800	.3125 7.938	2.0313 51.594	.2188 × .3438 × .2031 5.556 × 8.731 × 5.159	20	20	1,570	3,140	41.2	470	1 25.400
3.1250 79.375	2.5000 63.500	.3750 9.525	2.5625 65.088	.2813 × .4063 × .2656 7.144 × 10.319 × 6.747	.0010	.0010	2,500	5,490	84.8	935	1-1/4 31.750
3.7500 95.250	3.0000 76.200	.5000 12.700	3.0625 77.788	.3437 × .5000 × .3281 8.731 × 12.700 × 8.334			25	25	3,430	8,040	143
4.3750 111.125	3.5000 88.900	.5000 12.700	3.6875 93.662	.3437 × .5000 × .3281 8.731 × 12.700 × 8.334	.0012 30	.0012 30	6,080	15,900	399	2,620	2 50.800

1N \approx 0.225lbf 1N·m \approx 0.738lb·ft

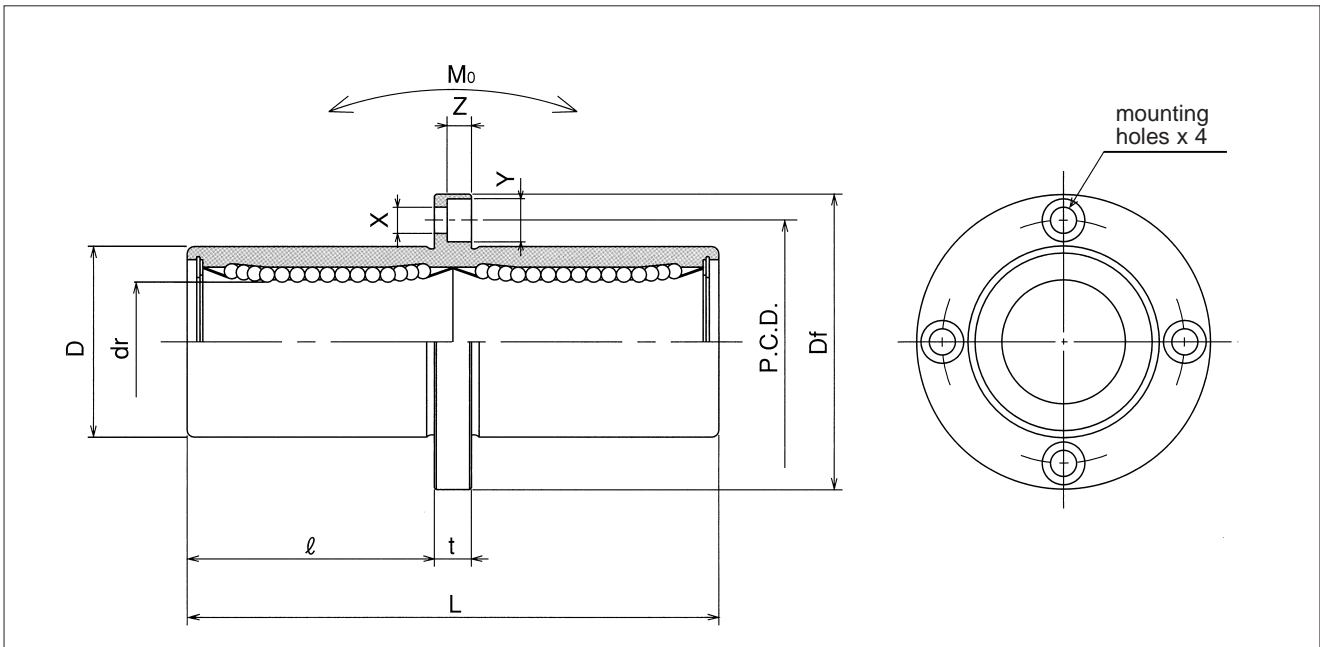
SWFC TYPE

– Center Mount Round Flange Type –

This type is an inch dimension series mainly used in the U.S.



part number				dr		D		L	∅
standard		anticorrosion		inch	tolerance	inch	tolerance	±0.12 ±0.3 inch mm	inch mm
steel retainer	resin retainer	stainless retainer	resin retainer	mm	inch/μm	mm	inch/μm		
SWFC 4	SWFC 4G	SWSFC 4	SWSFC 4G	.2500 6.350	0 -100040	.5000 12.700	0 -13	1.3750 34.925	.5781 14.684
SWFC 6	SWFC 6G	SWSFC 6	SWSFC 6G	.3750 9.525		.6250 15.875	0	1.5938 40.481	.6719 17.066
SWFC 8	SWFC 8G	SWSFC 8	SWSFC 8G	.5000 12.700	0 -10	.8750 22.225	0 -16	2.3750 60.325	1.0625 26.988
SWFC10	SWFC10G	SWSFC10	SWSFC10G	.6250 15.875		1.1250 28.575		2.8125 71.438	1.2813 32.544
SWFC12	SWFC12G	SWSFC12	SWSFC12G	.7500 19.050	0 -100050	1.2500 31.750	0 -19	3.0937 78.581	1.3906 35.322
SWFC16	SWFC16G	SWSFC16	SWSFC16G	1.0000 25.400	0 -12	1.5625 39.688	0 -19	4.2813 108.744	1.9844 50.403
SWFC20	SWFC20G	SWSFC20	SWSFC20G	1.2500 31.750	0 -100060	2.0000 50.800	0 -22	5.0000 127.000	2.3125 58.738
SWFC24	SWFC24G	SWSFC24	SWSFC24G	1.5000 38.100	0 -15	2.3750 60.325	0 -25	5.6875 144.463	2.5938 65.882
SWFC32	SWFC32G	SWSFC32	SWSFC32G	2.0000 50.800		3.0000 76.200		7.7500 196.850	3.6250 92.075



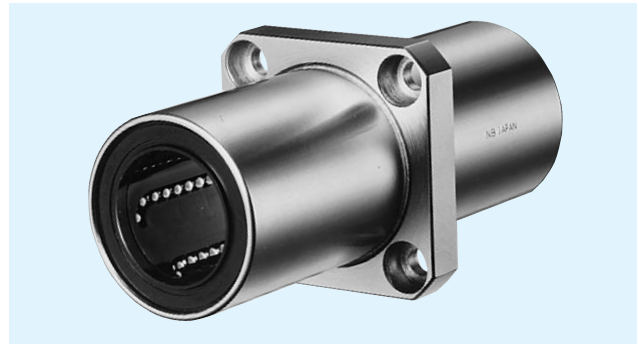
major dimensions				eccentricity	perpen- dicularity	basic load rating		allowable static moment	mass	shaft diameter
flange						dynamic	static			
Df inch mm	t inch mm	P.C.D. inch mm	X×Y×Z inch mm	inch μm	inch μm			C N	Co N	Mo N · m
1.2500 31.750	.2188 5.556	.8750 22.225	.1563 × .2500 × .1406 3.969 × 6.350 × 3.572	.0006	.0006	323	530	2.0	40	1/4 6.350
1.5000 38.100	.2500 6.350	1.0625 26.988	.1875 × .2969 × .1719 4.763 × 7.541 × 4.366			353	630	2.7	60	3/8 9.525
1.7500 44.450	.2500 6.350	1.3125 33.338	.1875 × .2969 × .1719 4.763 × 7.541 × 4.366			813	1,570	11.5	126	1/2 12.700
2.0000 50.800	.2500 6.350	1.5625 39.688	.1875 × .2969 × .1719 4.763 × 7.541 × 4.366			1,230	2,350	20.0	215	5/8 15.875
2.1875 55.563	.3125 7.938	1.7188 43.656	.2188 × .3438 × .2031 5.556 × 8.731 × 5.159	.0008	.0008	1,370	2,740	26.5	280	3/4 19.050
2.5000 63.500	.3125 7.938	2.0313 51.594	.2188 × .3438 × .2031 5.556 × 8.731 × 5.159			1,570	3,140	41.2	515	1 25.400
3.1250 79.375	.3750 9.525	2.5625 65.088	.2813 × .4063 × .2656 7.144 × 10.319 × 6.747	.0010	.0010	2,500	5,490	84.8	1,020	1-1/4 31.750
3.7500 95.250	.5000 12.700	3.0625 77.788	.3437 × .5000 × .3281 8.731 × 12.700 × 8.334			3,430	8,040	143	1,630	1-1/2 38.100
4.3750 111.125	.5000 12.700	3.6875 93.662	.3437 × .5000 × .3281 8.731 × 12.700 × 8.334	.0012 30	.0012 30	6,080	15,900	399	2,800	2 50.800

1N ≅ 0.225lbf 1N·m ≅ 0.738lb · ft

SWKC TYPE

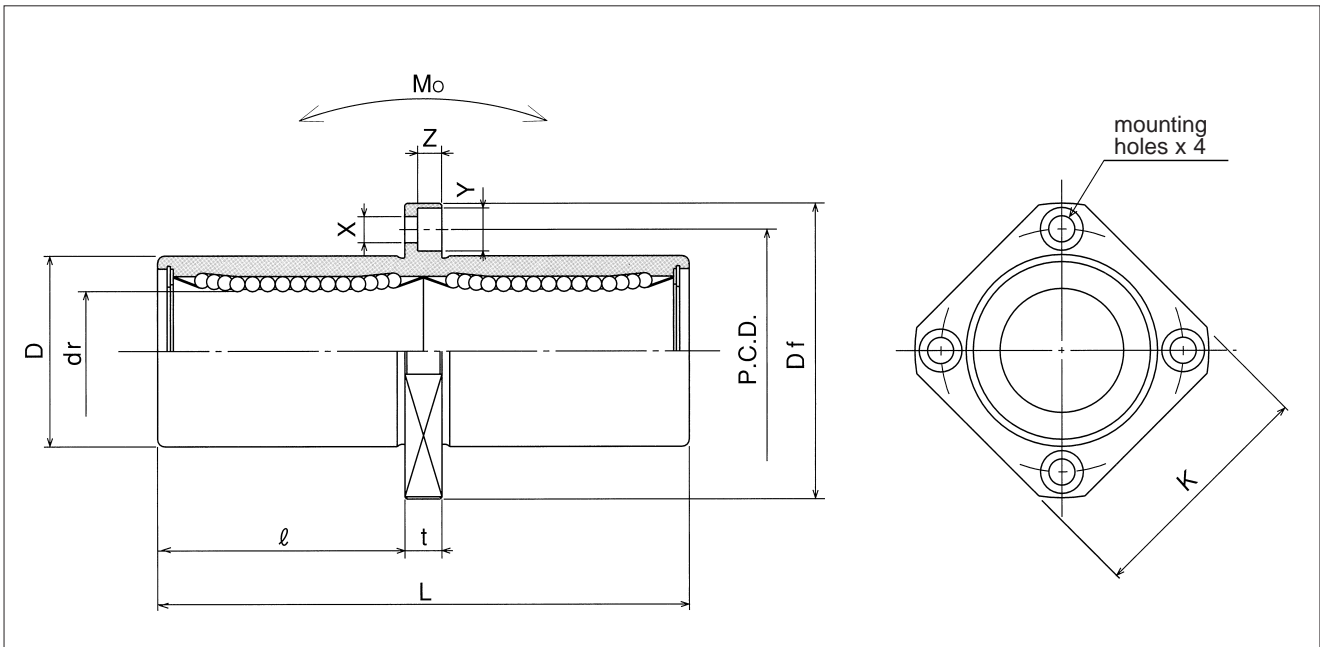
– Center Mount Square Flange Type –

This type is an inch dimension series mainly used in the U.S.



part number structure											
example	SWSKC 16 G UU - SK										
specification	<table border="1"> <tr> <td>SWKC</td> <td>standard</td> </tr> <tr> <td>SWSKC</td> <td>anticorrosion</td> </tr> </table>	SWKC	standard	SWSKC	anticorrosion						
SWKC	standard										
SWSKC	anticorrosion										
inner contact diameter											
retainer material	<table border="1"> <tr> <td>blank</td> <td>steel</td> </tr> <tr> <td>G</td> <td>resin</td> </tr> </table>	blank	steel	G	resin						
blank	steel										
G	resin										
outer cylinder surface treatment	<table border="1"> <tr> <td>blank</td> <td>no surface treatment</td> </tr> <tr> <td>SK</td> <td>electroless nickel plating</td> </tr> <tr> <td>LF</td> <td>low temperature black chrome treatment with fluoride coating</td> </tr> <tr> <td>SB</td> <td>black oxide*</td> </tr> <tr> <td>SC</td> <td>industrial chrome plating</td> </tr> </table>	blank	no surface treatment	SK	electroless nickel plating	LF	low temperature black chrome treatment with fluoride coating	SB	black oxide*	SC	industrial chrome plating
blank	no surface treatment										
SK	electroless nickel plating										
LF	low temperature black chrome treatment with fluoride coating										
SB	black oxide*										
SC	industrial chrome plating										
	*not available in SWSKC type										
seal	<table border="1"> <tr> <td>blank</td> <td>without seal</td> </tr> <tr> <td>UU</td> <td>seals on both sides</td> </tr> </table>	blank	without seal	UU	seals on both sides						
blank	without seal										
UU	seals on both sides										

part number				dr		D		L	∅
standard		anticorrosion		inch	tolerance	inch	tolerance	±.012 ±0.3 inch mm	inch mm
steel retainer	resin retainer	stainless retainer	resin retainer	mm	inch/μm	mm	inch/μm		
SWKC 4	SWKC 4G	SWSKC 4	SWSKC 4G	.2500 6.350	0 -100040	.5000 12.700	0 -13	1.3750 34.925	.5781 14.684
SWKC 6	SWKC 6G	SWSKC 6	SWSKC 6G	.3750 9.525		.6250 15.875	0 -16	1.5938 40.481	.6719 17.066
SWKC 8	SWKC 8G	SWSKC 8	SWSKC 8G	.5000 12.700	0 -10	.8750 22.225	0 -16	2.3750 60.325	1.0625 26.988
SWKC10	SWKC10G	SWSKC10	SWSKC10G	.6250 15.875		1.1250 28.575		2.8125 71.438	1.2813 32.544
SWKC12	SWKC12G	SWSKC12	SWSKC12G	.7500 19.050	0 -12	1.2500 31.750	0 -19	3.0937 78.581	1.3906 35.322
SWKC16	SWKC16G	SWSKC16	SWSKC16G	1.0000 25.400		1.5625 39.688		4.2813 108.744	1.9844 50.403
SWKC20	SWKC20G	SWSKC20	SWSKC20G	1.2500 31.750	0 -15	2.0000 50.800	0 -22	5.0000 127.000	2.3125 58.738
SWKC24	SWKC24G	SWSKC24	SWSKC24G	1.5000 38.100		2.3750 60.325		5.6875 144.463	2.5938 65.882
SWKC32	SWKC32G	SWSKC32	SWSKC32G	2.0000 50.800		3.0000 76.200	0 -25	7.7500 196.850	3.6250 92.075



major dimensions					eccentricity	perpendicularity	basic load rating		allowable static moment	mass	shaft diameter
flange							dynamic	static			
Df inch mm	K inch mm	t inch mm	P.C.D. inch mm	X×Y×Z inch mm	inch μm	inch μm	C N	Co N	Mo N·m	g	inch mm
1.2500 31.750	1.0000 25.400	.2188 5.556	.8750 22.225	.1563 × .2500 × .1406 3.969 × 6.350 × 3.572	.0006	15	323	530	2.0	33	1/4 6.350
1.5000 38.100	1.2500 31.750	.2500 6.350	1.0625 26.988	.1875 × .2969 × .1719 4.763 × 7.541 × 4.366			353	630	2.7	45	3/8 9.525
1.7500 44.450	1.3750 34.925	.2500 6.350	1.3125 33.338	.1875 × .2969 × .1719 4.763 × 7.541 × 4.366			813	1,570	11.5	106	1/2 12.700
2.0000 50.800	1.5000 38.100	.2500 6.350	1.5625 39.688	.1875 × .2969 × .1719 4.763 × 7.541 × 4.366			1,230	2,350	20.0	200	5/8 15.875
2.1875 55.563	1.6875 42.863	.3125 7.938	1.7188 43.656	.2188 × .3438 × .2031 5.556 × 8.731 × 5.159	.0008	20	1,370	2,740	26.5	240	3/4 19.050
2.5000 63.500	2.0000 50.800	.3125 7.938	2.0313 51.594	.2188 × .3438 × .2031 5.556 × 8.731 × 5.159			1,570	3,140	41.2	470	1 25.400
3.1250 79.375	2.5000 63.500	.3750 9.525	2.5625 65.088	.2813 × .4063 × .2656 7.144 × 10.319 × 6.747	.0010	25	2,500	5,490	84.8	935	1-1/4 31.750
3.7500 95.250	3.0000 76.200	.5000 12.700	3.0625 77.788	.3437 × .5000 × .3281 8.731 × 12.700 × 8.334			3,430	8,040	143	1,460	1-1/2 38.100
4.3750 111.125	3.5000 88.900	.5000 12.700	3.6875 93.662	.3437 × .5000 × .3281 8.731 × 12.700 × 8.334	.0012 30	.0012 30	6,080	15,900	399	2,620	2 50.800

1N ≅ 0.225lbf 1N·m ≅ 0.738lb·ft